

TRUST AND PRIDE

People are starting to talk... about the **Bridgestone R150**

**Low Profile Steer Tyre 295/80R22.5
For Medium and Long Haul Transport**



Since its release in 2001 Bridgestone's regional and linehaul steer tyre, the R150 has been making its mark as a long wearing and therefore low running cost tyre.

We'll let our happy customers results speak for themselves.

<p>LENNONS TRANSPORT. Sydney NSW</p>	<p>OPERATION: Sydney – Melbourne, general goods</p>	<p>KM RUN = 190498km</p>	
<p>Lennons Transport were lucky enough to be one of the first to test the R150 steer tyre a number of years ago where we achieved great results in tyre life, very limited shoulder wear, good driver acceptability and excellent road manners wet or dry. Since the first 2 sets of R150 were so successful, it is the only steer tyre we use in all our new trucks we spec the R150 from the factory. We currently have 18 trucks in single and B-Double configurations covering approximately 250000km per year. I can highly recommend Bridgestone and the R150 295/80 x 22.5 steer tyre.</p>			<p>VEHICLE: KW K104 B-double</p>
<p>WESTERN RESOURCE RECOVERY. Welshpool WA</p>	<p>OPERATION: Perth – Kalgoorlie, Liquid waste.</p>	<p>KM RUN = 141000km</p>	
<p>Our company has been using Bridgestone product for the past 3 years and we are more than happy with the performance and reliability of the Bridgestone Truck Tyres that we use. We are particularly impressed with the performance of Bridgestone's latest steer tyre the R150. We have recently achieved 141000 kilometres from this tyre on the front of one of our Western Stars. The truck pictured travels from Perth to Kalgoorlie carting controlled liquid waste</p>			<p>VEHICLE: Western Star Road train</p>
<p>CAHILL TRANSPORT VIC</p>	<p>OPERATION: B double Melb / sydney</p>	<p>KM RUN = 165149km</p>	
<p>I am very happy with the overall performance of the tyre, I have conducted tests of a number of tyres and found that the R150 was the best performed of all. I run the R150 right through the entire fleet of linehaul and local vehicles.</p>			<p>VEHICLE: KW B-double</p>
<p>Mick Gulliver State Operations Manager - Cahill Transport</p>			

TRUST AND PRIDE

<p>ZAMMIT HAULAGE VIC</p>	<p>OPERATION: Quarry road works – Melbourne and regional</p>	<p>KM RUN = 110626km</p>	
<p>I have tested many different tyres on the steer of my vehicle, but I have found that the R150 has delivered the best performance and wet weather handling. I was also very happy with the way the R150 wears (very flat) and the kilometres they achieved compared to other brands I have used, they are a very good tyre. (Previous other brand tyre, 98000 km)</p> <p>John Zammit Zammit Haulage</p>			<p>VEHICLE: Ford L8000 Rigid Tipper</p>
<p>RON CROUCH TRANSPORT Wagga NSW</p>	<p>OPERATION: Wagga- Sydney</p>	<p>KM RUN = 166940km and 180000km</p>	
<p>Ron Crouch transport, like most smart operators want good reliability and also low operating costs for their tyres. So they use good quality brands, and have found that the R150 steer tyre gives better mileage and so lower cost.</p> <p>“The R150’s are achieving 160000 to 180000 km on average, which is around 20% better than our previous top brand tyres. This means a lower cost at the end of the day. We also use the M722 Drive tyre and get 240000 to 260000 km”</p> <p>“One set of R150’s has done an amazing 220000km”</p> <p>Geoff Crouch</p>			<p>VEHICLE: Sterling</p>
<p>MARK M^CLURG TRANSPORT SA</p>	<p>OPERATION: Melbourne - Adelaide</p>	<p>KM RUN = 180000</p>	
			<p>VEHICLE: KW T600</p>

TRUST AND PRIDE

<p>TAYLOR TRANSPORT SA</p>	<p>OPERATION: Adelaide- Melbourne - Albury</p>	<p>KM RUN = 175285</p>	
<p>"I am extremely happy with the R150 steer tyres. Particularly handling and steering response"</p> <p>Gary Taylor</p>			

VEHICLE: Inter – S-Line 3600

<p>STEVEN PEEL WAGGA NSW</p>	<p>OPERATION: Wagga- Sydney Wagga - Melbourne</p>	<p>KM RUN = 168531 km steer plus 37269 on trailer</p>	
<p>The R150 has been the only tyre that has worked for me. Having tried all the others brands the R150s out performed them all. Are currently averaging 170000 to 180000 on the steer. We then pull them off and put them on the trailer and get 40000 to 50000 more then recap them in trailer pattern</p> <p>Your faithfully, STEVEN PEEL . Director</p>			

VEHICLE: KW T601

<p>SHAILER HAULAGE QLD</p>	<p>OPERATION: North Qld- Brisbane</p>	<p>KM RUN = 229619 km and 219768 km</p>	
<p>We have experienced a great run out of R150s. We also get well over 300000km from our Bridgestone M722 Australian made drive tyres.</p> <p>We carry cubic loads, so that makes for easy work, but this sort of tyre life is better than we have had before.</p> <p>Bridgestone Rocklea look after our maintenance – we make sure we get our trucks down there for regular rotations and pressure checks. That makes a big difference in getting great tyre wear</p> <p>Bobby Taylor – Shailer Haulage</p>			

VEHICLE: Iveco Powerstar

TRUST AND PRIDE



Designed exclusively for Australian conditions, the R150 has undergone millions of kilometres of testing on varying road surfaces across Australia.

Phil Burnard, product planning coordinator (TBR) explains, “Australian trucking operations are different from anywhere else in the world. That’s why we develop tyres uniquely for Australia. The R150 was designed from scratch for Australia – a new design to suit our conditions. Unlike many of our competitors, we have a team of Australian engineers constantly involved in evaluating and benchmarking our product. Together with designers and engineers from Japan we fine tune and develop new patterns.”

R150 Record km from test: 257995 km

OPERATION : KW K104 475 HP B-double – Sydney – Melbourne – Adelaide.

Maintenance level; 120 psi checked monthly and rotation approx every 30000km

Photo left: Phil with the record R150 steer tyres.

“It just goes to show you the amazing run you can get from good maintenance together with an excellent steer tyre”

Manufactured in Japan, the R150 is built with the quality and advanced technology that is synonymous with every Bridgestone tyre.

Straight Circumferential Grooves

- Directional stability
- Resistance to hydroplaning

Stone Ejectors

- Minimise stone drilling – improves casing durability

New Tread Compound

- Improves wear life

Solid Shoulder Design

- Improves stability
- Minimise step-down shoulder wear

High Stiffness Shoulder Rib

- Minimise shoulder-edge wear

Variable Pitch Blocks

- Minimise pattern noise

Block Design with shallow one-way groove

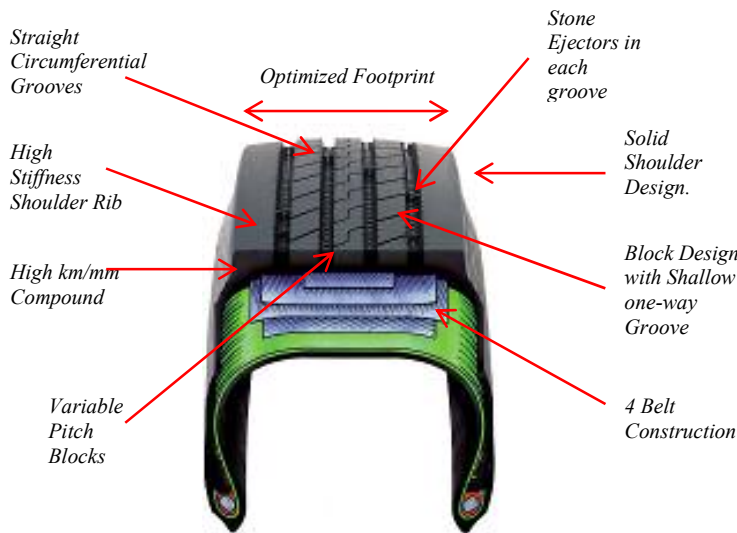
- Improves steering feedback

Optimised Footprint

- Improve grip
- Minimise shoulder wear

4 Belt Construction

- Durability
- Excellent retreadability



Specifications

Size	Ply Rating	LI/SS	Overall Diameter (mm)	Overall Width (mm)	Max Load @ (kg)	Inflation Pressure (kPa)	Approved Rim Codes	OTD (mm)	Product Code
295/80R22.5	16	152/148M	1055	298	3466	825	8.25 – 9.00	15.8	718708